

PELLET

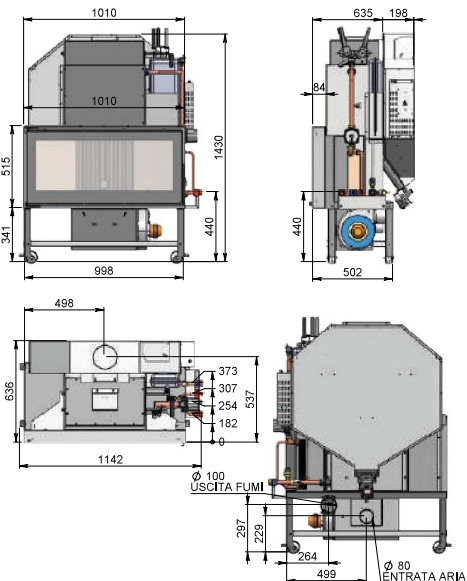
Camini HYDRO PELLE PELLET HYDRO fireplace



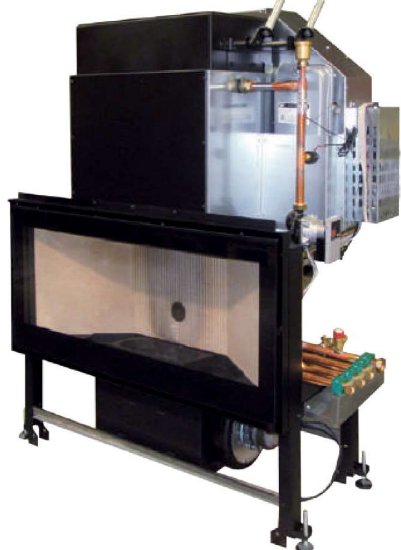
L'ARTISTICO
caminetti & stufe

Combustibile / Fuel	Pellet
Potenza Input / Nominale / Ridotta / Input / Nominal / Min. thermal output	Max 35 / Nom. 31,5 / Min. 8,9 kW
Potenza termica resa all'acqua / Power given back to water	max 22,0 kW / min 5,1 kW
Potenza termica all'ambiente / Power given back to the room	max 9,5 kW / min 3,8 kW
Rendimento / Efficiency	max 91 % / min 94%
Consumo orario pellet / Hourly pellet consumption	max ~7,0 Kg/h / min ~1,9 Kg/h
Autonomia / Autonomy	max ~12,9 h / min ~47,4 h
Capacità serbatoio pellet / Tank pellet capacity	90 Kg
Pressione massima d'esercizio / Max working pressure	2,0 bar
Assorbimento elettrico a regime / Power electrical worker operatively	max 470 W / 105 W
Peso netto / Net weight	240 Kg

MARLIN 1000 MH32 ACS



Ce = 1,5
 Radio
 Right
 H₂O
 Sanit
 Electronic



51247 Monoblocco Pellet idro MARLIN 1000 MH32 ACS, compreso di kit acqua calda per caloriferi + sanitari
Hydro pellet Fireplace MARLIN 1000 MH32 ACS, included kit warm water for radiators and sanitary

6.300 €

PRODOTTI NECESSARI ALL'INSTALLAZIONE: porta ispezione, bocchette, tubi aria, etc., dettaglio analitico da pag. 203 e da pag. 256 con relative caratteristiche tecniche.
 INSTALLATION NECESSARY PRODUCTS: inspection door, air vents, air pipes, etc., analytical detail on page 203 and page 256 with its technical characteristics.